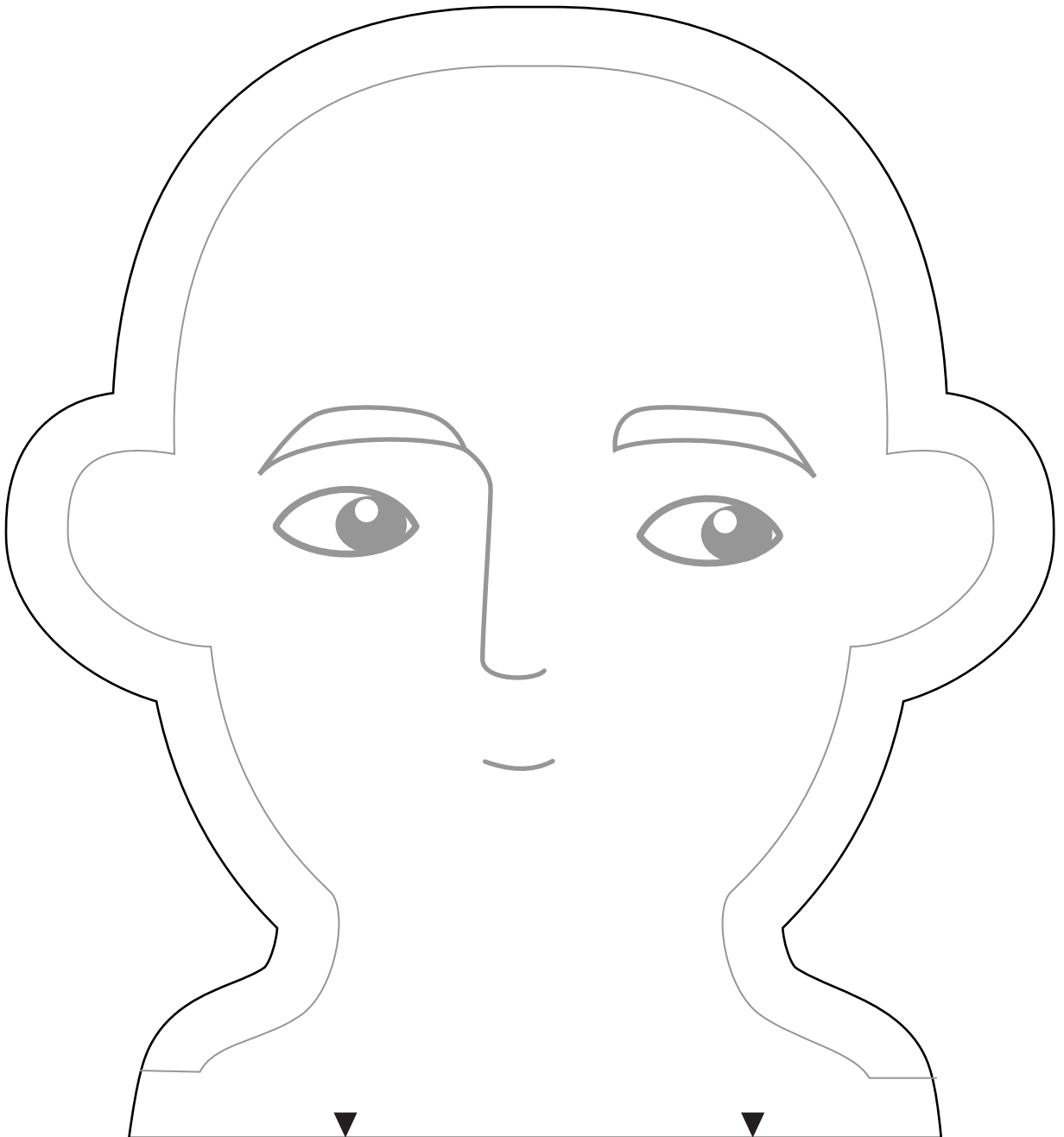
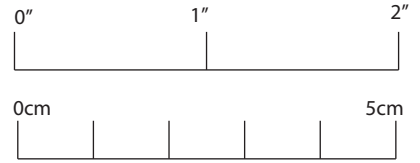


Jungenpuppe

Dieses Schnittmuster ist speziell für die Stoffpuppen-Kollektion entwickelt worden.

3/8" (10mm) Nahtzugabe ist enthalten, sofern nicht anders in der Anleitung angegeben.

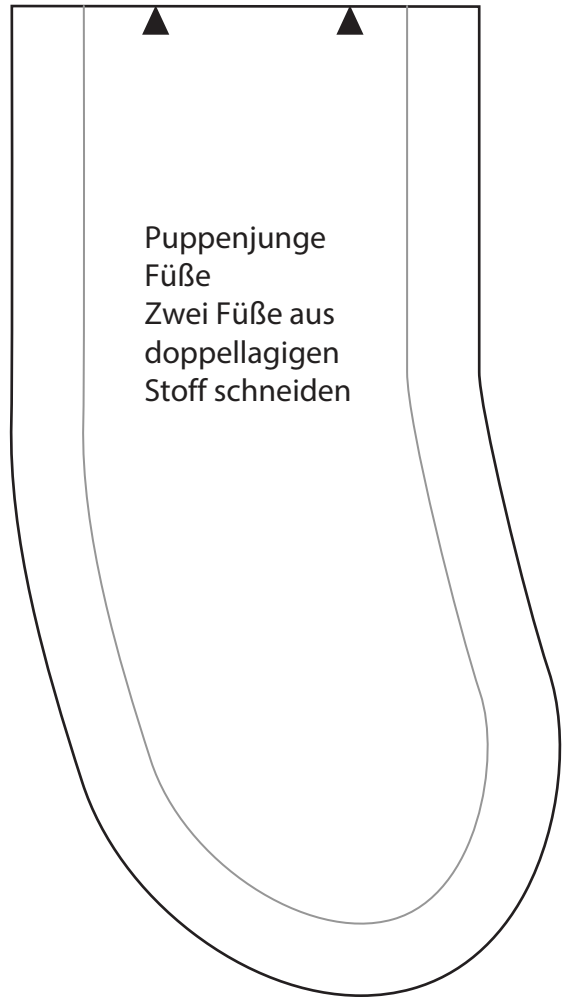
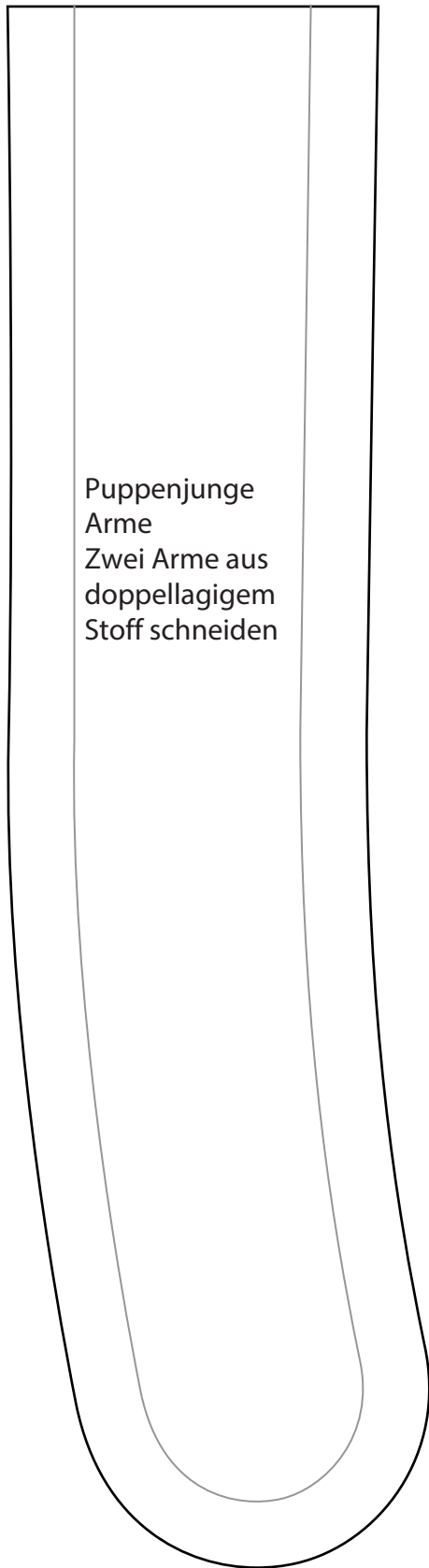


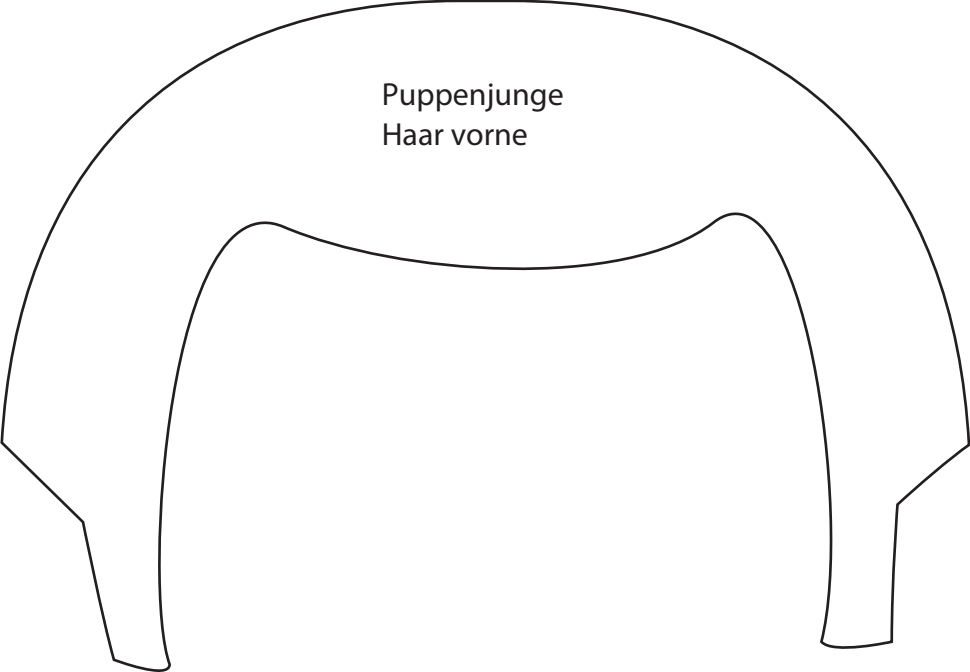
Puppenjunge Beinschnitt
Zwei Beine aus doppelagigen Stoff
schneiden



Puppenjunge
Körper
Zwei Teile
schneiden

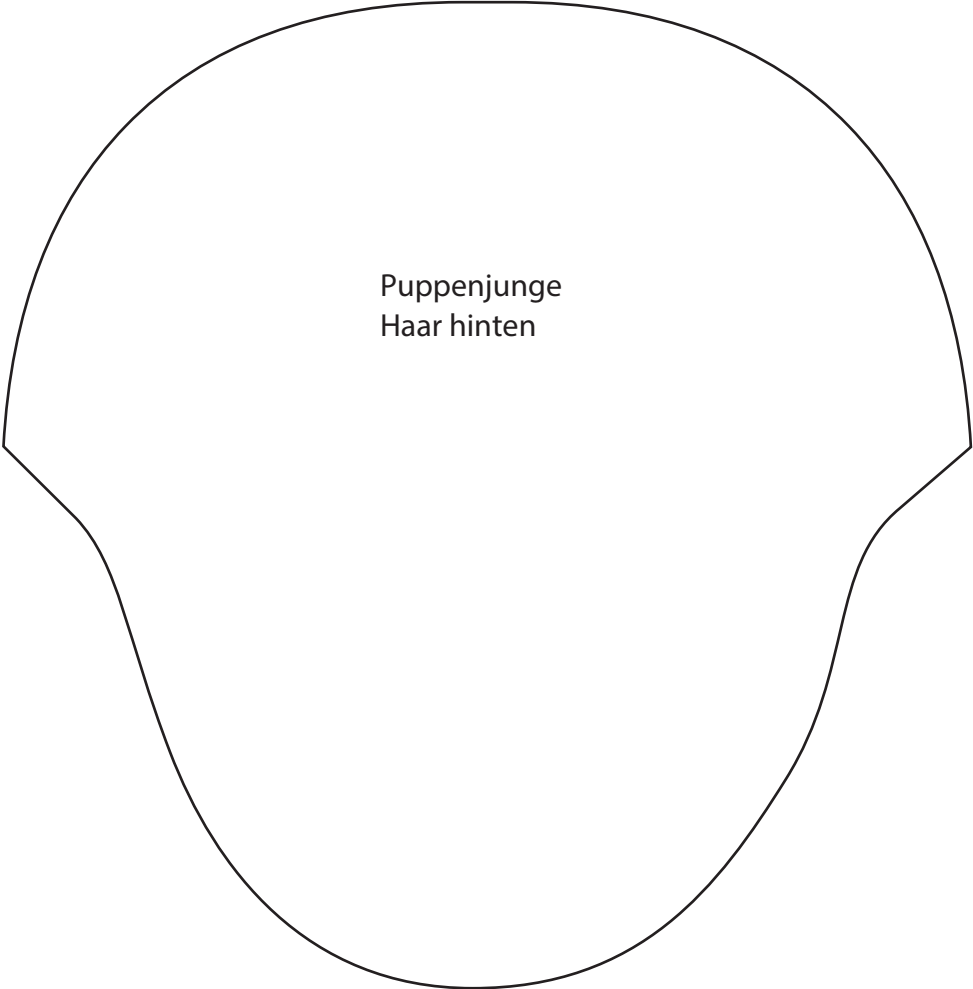






Puppenjunge
Haar vorne

This is a line drawing of a wig template for a doll's front hair. It features a semi-circular top edge, a curved inner line defining the hair's shape, and two side flaps with pointed ends for fitting around the doll's head.



Puppenjunge
Haar hinten

This is a line drawing of a wig template for a doll's back hair. It has a semi-circular top edge, a curved inner line, and two side flaps with pointed ends, mirroring the design of the front hair template.